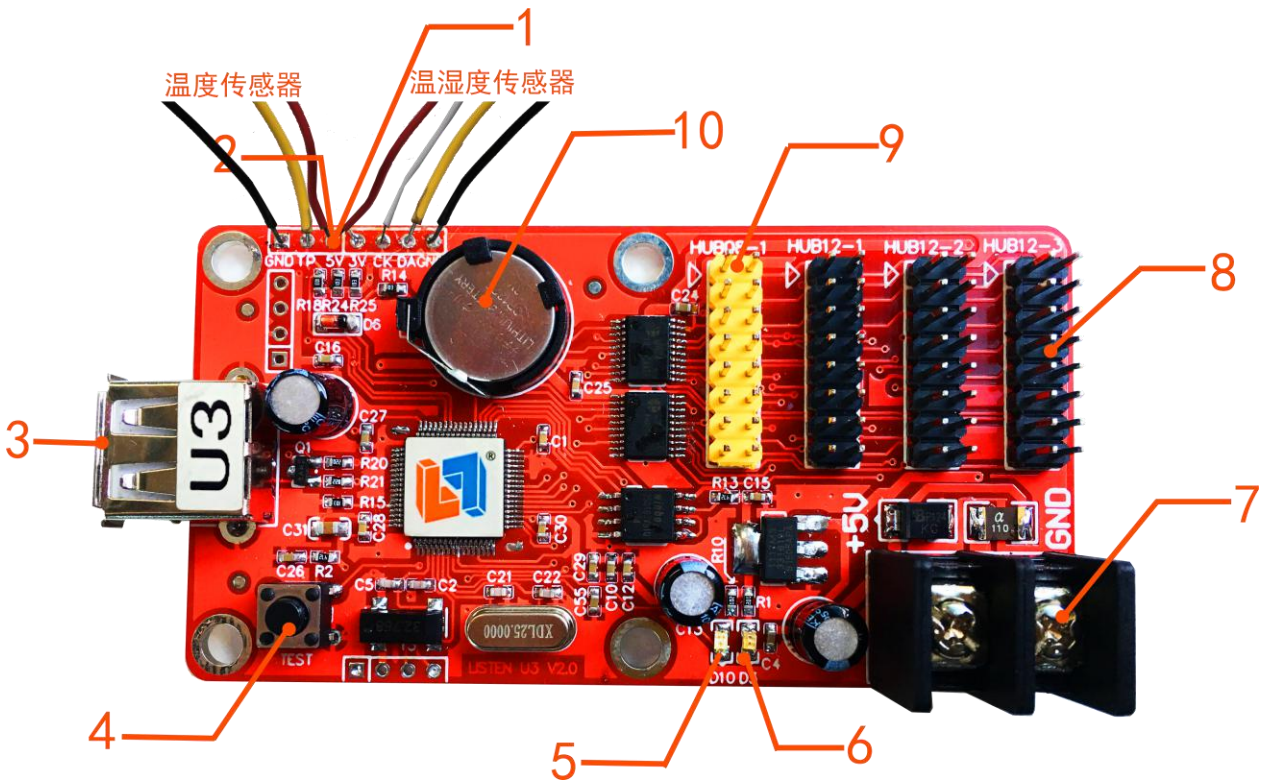


SPECIFICATION FOR U3

| Version | Date | Reason |
|---------|------------|----------|
| V2.00 | 21/03/2017 | Document |

Hardware



| Number | Interface Name | Description |
|--------|-------------------------------|--|
| 1 | Temperature & Humidity Sensor | Temperature & Humidity Interface |
| 2 | Sensor Interface | Connect Sensor |
| 3 | USB Interface | USB |
| 4 | Multi-functional Button | Functions: 1.test LED display 2.reset factory data |
| 5 | Operation Light | Show operating status |
| 6 | 5V Power Light | Show Power status |
| 7 | 5V Power port | Wide voltage input 4.5V-6V |
| 8 | HUB12 | HUB12 interface |
| 9 | HUB08 | HUB08 interface |
| 10 | RTC Button Battery | RTC Battery, voltage 3V, CR1225 |

Parameters

| | |
|------------------------------|---|
| Application | All LED display |
| Pixels | Single: 32K double : 24K |
| Load | SINGLE: 2048*16 1920*32 1280*48 (MAX 1280*48) DOUBLE: 1920*16 960*32 640*48 |
| Software Function | Multi-area display, multi-language |
| Program | 128 programs, each has 16 areas |
| Area Type | Subtitle/ text/ image/ program frame/ area frame/ animation/ background/ digit clock/ timing area/ dial plate area/ static excel/ temperature/ humiture |
| Frame | Program water frame/ area water frame |
| Clock | Digit clock/ analog clock/ count up/ down |
| Communication Mode | USB interface (U disk , FAT , FAT32 , ExFAT) |
| Display Interface | 3*HUB12 , 1*HUB08 |
| Sensor | Temperature sensor (water-proof, high precision) , temperature& humidity sensor (high precision) |
| Brightness Loss | 16 level, adjust brightness automatically or via software |
| Remote Switch | Timing auto switch or via software |
| Startup Picture | Startup picture, startup program) |
| Voltage | 5V(4.5-5.5V) , < 1W |
| Memory | 2MByte |
| Working Temperature | -40℃-85℃ |
| Secondary Development | DLL dynamic library |
| Auxiliary Software | LED Player 6.0 (LED Player 6.1.xx) |

Dimension Drawing

